

توثيق دورة التحليل الإحصائي لأعضاء هيئة التدريس

إعلان

تعلن وحدة القياس والتقويم عن عقد دروه
تدريبية للسادة اعضاء هيئة التدريس ومعاونيهم
بعنوان " التحليل الإحصائي لبرنامج التصحيح
الإلكتروني " وذلك في تمام الساعة الحادية عشر
بقاعة المناقشات بكلية التربية الرياضية بنها .

مدير وحدة القياس والتقويم

أ.د/ تامر حسين الشتيحي

القائم بالتدريب

• أ.د / تامر حسين الشنيتي

منسق الدورة

• وحدة القياس والتقويم بالكلية

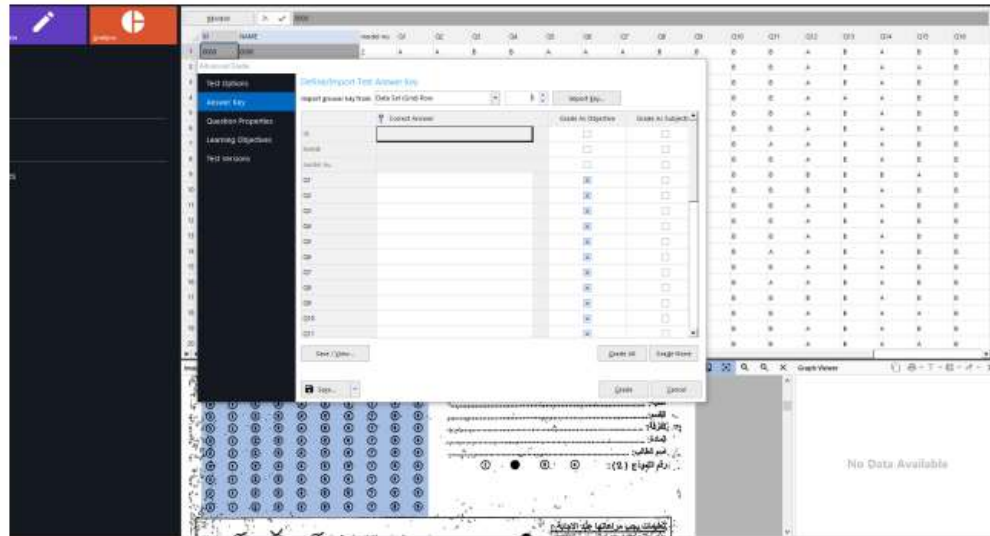
صور من المحتوى العلمي

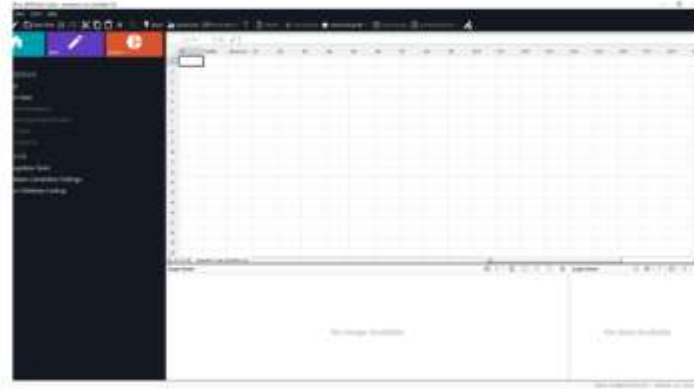


Condensed Test Report											
Legend: Distractors Chosen More than Correct Answer											
Total Possible Points:			Median Score:			Maximum Score:					
33			23			33			23		
Total Students:			Mean Score:			Minimum Score:			Range of Scores:		
219			21.67			16			5-33		
Standard Deviation:			Reliability Coefficient (KR20):								
3.21			0.99								
No.	Description	Correct Answers	Response Frequencies				None Selected	Correct Group Response			Point Threshold
			A	B	C	D	Total %	Mean %	Lower %	Upper %	
1	Q1	A	38.80	1.20	0.00	0.00	38.80	17.80	32.00	37.81	3.74
2	Q2	A	31.63	11.00	0.00	0.00	31.63	14.90	26.00	30.96	3.74
3	Q3	B	31.63	83.61	0.00	0.00	83.61	38.19	67.16	87.16	6.26
4	Q4	B	46.35	53.65	0.00	0.00	53.65	24.45	39.06	50.92	4.92
5	Q5	A	35.18	2.00	0.00	0.00	35.18	16.52	29.52	32.67	3.67
6	Q6	A	33.54	3.64	0.00	0.00	33.54	15.77	28.87	31.78	3.78
7	Q7	A	33.54	3.64	0.00	0.00	33.54	15.77	28.87	31.78	3.78
8	Q8	B	21.21	5.49	0.00	0.00	5.49	2.50	4.88	10.81	1.81
9	Q9	B	32.62	68.67	0.00	0.00	68.67	31.54	47.29	64.68	5.68
10	Q10	B	29.88	72.04	0.00	0.00	72.04	33.35	48.72	64.68	5.68
11	Q11	B	35.52	65.88	0.00	0.00	65.88	30.54	45.76	61.45	5.45
12	Q12	A	33.87	2.00	0.00	0.00	33.87	15.47	28.59	31.59	3.59
13	Q13	B	32.67	36.63	0.00	0.00	36.63	16.73	29.29	31.54	3.54
14	Q14	A	36.84	11.00	0.00	0.00	36.84	16.82	29.21	32.16	3.16
15	Q15	B	48.35	52.65	0.00	0.00	52.65	24.45	39.06	50.92	4.92
16	Q16	B	35.84	69.16	0.00	0.00	69.16	32.00	47.16	64.68	5.68
17	Q17	B	31.63	93.37	0.00	0.00	93.37	43.01	67.81	87.81	7.81
18	Q18	B	33.54	64.78	0.00	0.00	64.78	29.88	44.87	61.45	5.45
19	Q19	B	31.63	73.98	0.00	0.00	73.98	33.35	48.72	64.68	5.68
20	Q20	A	34.39	28.78	0.00	0.00	28.78	13.10	22.81	27.22	2.72
21	Q21	B	33.64	69.36	0.00	0.00	69.36	32.16	47.16	64.68	5.68
22	Q22	B	31.24	64.36	0.00	0.00	64.36	29.88	44.87	61.45	5.45
23	Q23	B	31.24	64.36	0.00	0.00	64.36	29.88	44.87	61.45	5.45
24	Q24	A	33.41	13.89	32.73	0.00	32.73	15.13	27.86	31.78	3.78
25	Q25	C	7.23	33.33	63.33	0.00	63.33	29.35	44.44	58.89	4.89
26	Q26	A	34.39	13.89	32.73	0.00	32.73	15.13	27.86	31.78	3.78
27	Q27	A	33.54	12.61	11.11	0.00	11.11	5.05	9.49	20.65	2.65
28	Q28	B	31.22	28.00	36.64	0.00	36.64	16.73	29.29	31.54	3.54
29	Q29	B	31.63	66.78	1.61	0.00	66.78	30.54	45.76	61.45	5.45
30	Q30	C	3.64	3.64	96.36	0.00	96.36	44.87	61.45	87.81	7.81

Condensed Item Analysis Report				
Legend:	Correct	Incorrect	Distractors Chosen More than Correct Answer	Changed Answer
Q1				
Response	Frequency	Percent		
* A	240	98.80		
B	3	1.20		
C	0	0.00		
D	0	0.00		
Q2				
Response	Frequency	Percent		
* A	79	31.73		
B	109	67.87		
C	0	0.00		
D	0	0.00		
Multiple	1	0.40		
Q3				
Response	Frequency	Percent		
A	40	16.06		
* B	207	83.13		
C	0	0.00		
D	0	0.00		
Multiple	2	0.80		
Q4				
Response	Frequency	Percent		
A	116	46.59		
* B	133	53.41		
C	0	0.00		
D	0	0.00		
Q5				
Response	Frequency	Percent		
* A	237	95.18		
B	12	4.82		
C	0	0.00		
D	0	0.00		
Q6				
Response	Frequency	Percent		
* A	227	91.10		
B	22	8.90		
C	0	0.00		
D	0	0.00		
Q7				
Response	Frequency	Percent		
* A	234	93.98		
B	15	6.02		
C	0	0.00		
D	0	0.00		
Q8				
Response	Frequency	Percent		
A	230	94.78		
* B	13	5.22		
C	0	0.00		
D	0	0.00		
Q9				
Response	Frequency	Percent		
Q10				
Response	Frequency	Percent		

Item Analysis Graph Report			
Q1		Response	Percent
		A	98.80
		B	1.20
		C	0.00
		D	0.00
		Correct:	A
Q2		Response	Percent
		A	31.73
		B	67.87
		C	0.00
		D	0.00
		Correct:	A
Q3		Response	Percent
		A	16.06
		B	83.13
		C	0.00
		D	0.00
		Correct:	B
Q4		Response	Percent
		A	46.59
		B	53.41
		C	0.00
		D	0.00
		Correct:	B
Q5		Response	Percent
		A	95.18
		B	4.82
		C	0.00
		D	0.00
		Correct:	A
Q6		Response	Percent
		A	91.10
		B	8.90
		C	0.00
		D	0.00
		Correct:	A
Q7		Response	Percent
		A	93.98
		B	6.02
		C	0.00
		D	0.00
		Correct:	A
Q8		Response	Percent
		A	94.78
		B	5.22
		C	0.00
		D	0.00
		Correct:	B





صور من فعاليات الدورة

